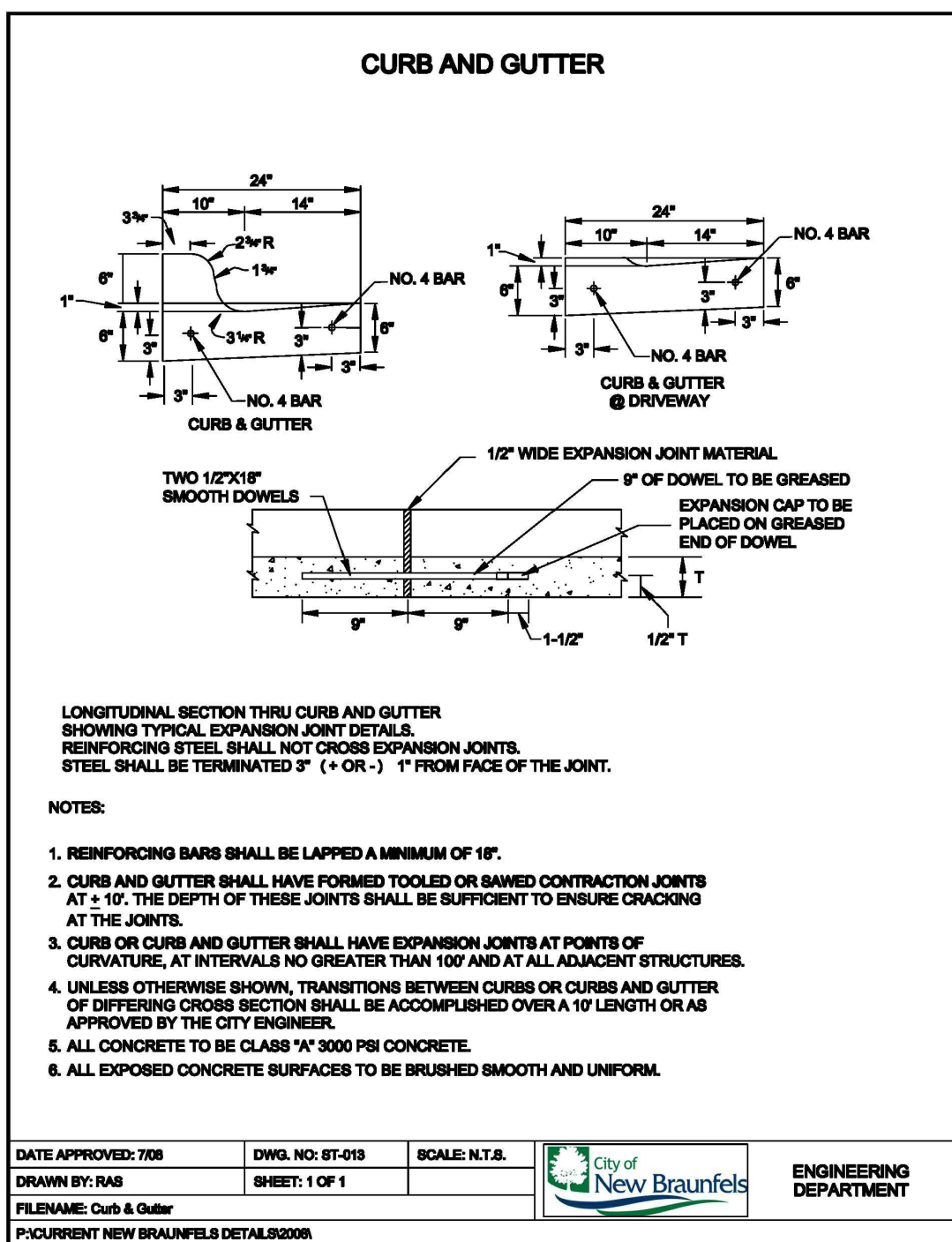
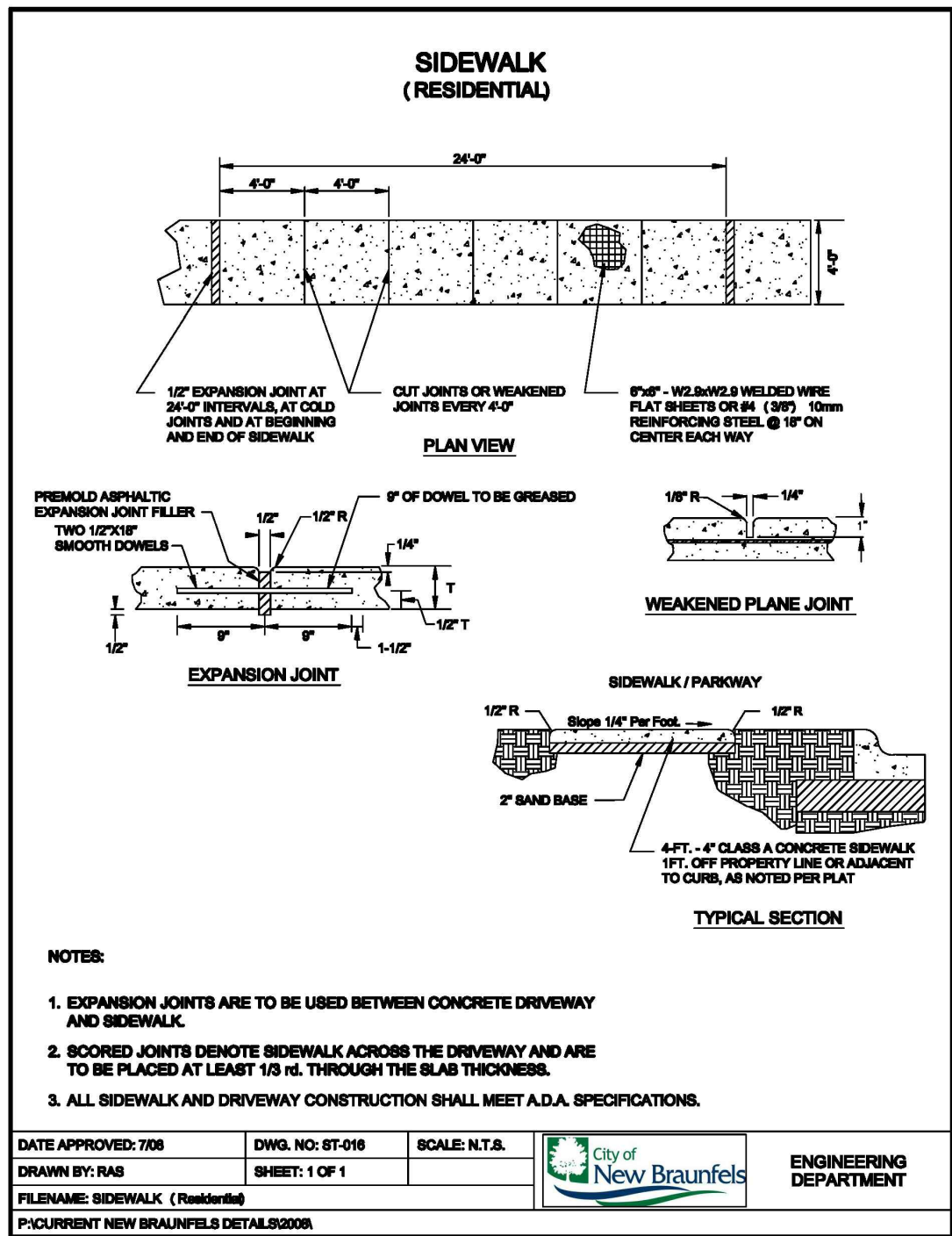


1 ACCESSIBLE PARKING SIGN
N.T.S.



290 S. CASTELL AVE., STE. 100
NEW BRAUNFELS, TX 78130
TBP FIRM F-10961
TBP FIRM 1053600



07/29/2020

SITE DETAILS

VANGUARD FARMS APARTMENTS

NO.	REVISION	DESCRIPTION	DATE

DATE: JULY 2019

DRAWN BY: LB

DESIGNED BY: JMM

REVIEWED BY: CVH

HMT PROJECT NO.:
323.001

SHEET
C6.7